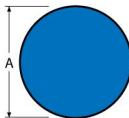
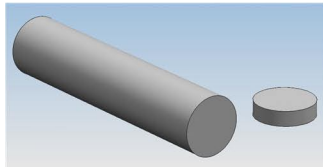


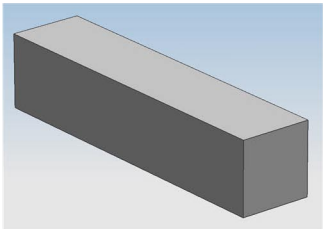
HOT ROLLED ROUND BARS

Size	Wt. Per Ft.	Wt. For 20' Length
3/16"	0.094	1.88
1/4"	0.167	3.34
5/16"	0.261	5.22
3/8"	0.376	7.52
1/2"	0.668	13.36
5/8"	1.040	20.80
3/4"	1.500	30.00
7/8"	2.040	40.80
1"	2.670	53.40
1-1/8"	3.380	67.60
1-1/4"	4.170	83.40
1-3/8"	5.050	101.00
1-1/2"	6.010	120.20
1-5/8"	7.050	141.00
1-3/4"	8.180	163.60
1-7/8"	9.390	187.80
2"	10.680	213.60
2-1/4"	13.520	270.40
2-3/8"	15.600	301.20
2-1/2"	16.690	333.80
2-5/8"	18.400	368.00
2-3/4"	20.190	403.80
3"	24.030	480.60
3-1/4"	28.210	564.20
3-1/2"	32.710	654.20
3-3/4"	37.550	751.00
4"	42.730	854.60
4-1/4"	48.230	964.60
4-1/2"	54.080	1081.60
4-5/8"	57.120	1142.40
4-3/4"	60.250	1205.00
5"	66.760	1335.20
5-1/4"	73.600	1472.00
5-1/2"	80.780	1615.60
5-3/4"	88.290	1765.80
6"	96.130	1922.60
6-1/4"	104.300	2086.00
6-1/2"	112.800	2256.00
6-3/4"	121.700	2434.00
7"	130.900	2618.00
7-1/4"	140.400	2808.00
7-1/2"	150.200	3004.00
7-3/4"	160.400	3208.00
8"	170.900	3418.00
8-1/4"	181.800	3636.00
8-1/2"	192.900	3858.00
8-3/4"	204.500	4090.00
9"	216.300	4326.00
9-1/4"	228.500	4570.00
9-1/2"	241.000	4820.00
10"	267.000	5340.00
10-1/2"	294.400	5888.00
11"	332.100	6462.00
12"	384.500	7690.00



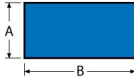
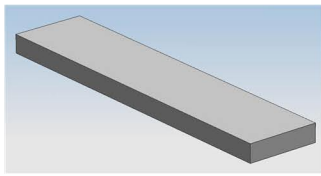
HOT ROLLED SQUARES

Size (inches)	Wt. Per Ft.	Wt. Per 20' Length
1/4	0.21	4.26
3/8	0.48	9.56
7/16	0.65	13.02
1/2	0.85	17.00
9/16	1.08	21.60
5/8	1.33	26.60
11/16	1.61	32.20
3/4	1.91	38.20
7/8	2.60	52.00
1	3.40	68.00
1-1/8	4.30	86.00
1-1/4	5.31	106.20
1-3/8	6.43	128.60
1-1/2	7.65	153.00
1-5/8	8.98	179.60
1-3/4	10.41	208.20
1-7/8	11.95	239.00
2	13.60	272.00
2-1/4	17.21	344.20
2-1/2	21.25	425.00
2-3/4	25.71	514.20
3	30.60	612.00
3-1/4	35.91	718.20
3-1/2	41.65	833.00
3-3/4	47.81	956.20
4	54.40	1088.00
4-1/2	68.85	1377.00
5	85.00	1700.00
6	122.40	2448.00



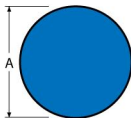
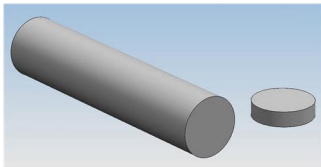
HOT ROLLED FLAT BARS

Size	Wt. Per Ft.	Wt. For 20' Length	Size	Wt. Per Ft.	Wt. For 20' Length	
1/4" X 3/8"	0.32	6.35	3/4" X 7/8"	2.23	44.60	
1/2"	0.43	8.50	1"	2.55	51.00	
5/8"	0.53	10.62	1-1/8"	2.87	57.40	
3/4"	0.64	12.76	1-1/4"	3.19	63.80	
7/8"	0.74	14.88	1-1/2"	3.53	70.60	
1"	0.85	17.00	1-3/4"	4.47	83.00	
1-1/8"	0.96	19.12	2"	5.10	102.00	
1-1/4"	1.06	21.20	2-1/4"	5.74	114.80	
1-3/8"	1.17	23.40	2-1/2"	6.38	127.60	
1-1/2"	1.28	25.60	2-3/4"	7.02	140.40	
1-5/8"	1.38	27.60	3"	7.66	153.20	
1-3/4"	1.49	29.80	3-1/4"	8.30	166.00	
2"	1.70	34.00	3-1/2"	8.93	178.60	
2-1/4"	1.91	38.20	4"	10.21	204.20	
2-1/2"	2.13	42.60	4-1/2"	11.49	229.80	
2-3/4"	2.34	46.80	5"	12.76	255.20	
3"	2.55	51.00	5-1/2"	14.04	280.80	
3-1/4"	2.76	55.20	6"	15.31	306.20	
3-1/2"	2.98	59.60	7"	17.87	357.40	
3-3/4"	3.19	63.80	8"	20.42	408.40	
4"	3.40	68.00	9UM	22.97	459.40	
4-1/4"	3.61	72.20	10UM	25.52	510.40	
4-1/2"	3.83	76.60	12UM	30.63	612.60	
5"	4.25	85.00	7/8" X	1"	2.98	59.60
5-1/2"	4.68	93.60	1-1/4"	3.72	74.40	
6"	5.10	102.00	1-3/8"	4.09	81.80	
7"	5.95	119.00	1-1/2"	4.46	89.20	
7-1/2"	6.38	127.60	1-3/4"	5.21	104.20	
8"	6.80	136.00	2"	5.95	119.00	
9UM	7.66	153.20	2-1/4"	6.69	133.80	
10UM	8.51	170.20	2-1/2"	7.44	148.80	
11UM	9.36	187.20	3"	8.93	178.60	
11-1/2"UM	9.78	195.60	3-1/2"	10.41	208.20	
12UM	10.21	204.20	4"	11.90	238.00	
5/16" X	1/2"	0.53	4-1/2"	13.39	267.80	
5/8"	0.66	13.28	5"	14.88	297.60	
3/4"	0.80	15.94	5-1/2"	16.36	327.20	
7/8"	0.93	18.60	6"	17.85	357.00	
1"	1.06	21.20	7"	20.83	416.60	
1-1/8"	1.20	24.00	8"	23.80	476.00	
1-1/4"	1.35	26.60	10UM	29.78	595.60	
1-3/8"	1.46	29.20	12UM	35.73	714.60	
1-1/2"	1.59	31.80	1" X	1-1/4"	4.25	85.00
1-3/4"	1.86	37.20	1-1/2"	5.10	102.00	
2"	2.13	42.60	1-3/4"	5.95	119.00	
2-1/4"	2.39	47.80	2"	6.80	136.00	
2-1/2"	2.66	53.20	2-1/4"	7.65	153.00	
2-3/4"	2.92	58.40	2-1/2"	8.50	170.00	
3"	3.19	63.80	2-3/4"	9.35	187.00	
3-1/4"	3.45	69.00	3"	10.20	204.00	
3-1/2"	3.72	74.40	3-1/4"	11.05	221.00	
4"	4.25	85.00	3-1/2"	11.90	238.00	
4-1/2"	4.78	95.60	4"	13.60	272.00	
5"	5.31	106.20	4-1/2"	15.30	306.00	
5-1/2"	5.84	116.80	5"	17.00	340.00	
6"	6.38	127.60	5-1/2"	18.70	374.00	
7"	7.44	148.80	6"	20.40	408.00	
8"	8.50	170.00	7"	23.80	476.00	
9UM	9.57	191.40	8"	27.20	544.00	
10UM	10.64	212.80	9UM	30.63	612.60	
12UM	12.76	255.20	10UM	34.03	680.60	
			11UM	37.44	748.80	
3/8" X	1/2"	0.64	12UM	40.84	816.80	
5/8"	0.80	15.90	1-1/8" X	2"	7.65	153.00
3/4"	0.96	19.12	2-1/2"	9.56	191.00	
7/8"	1.12	22.40	3"	11.48	229.60	
1"	1.28	25.60	3-1/2"	13.39	267.80	
1-1/8"	1.44	28.80	4"	15.30	306.00	
1-1/4"	1.60	32.00	5"	19.13	382.60	
1-3/8"	1.75	35.00	6"	22.95	459.00	
1-1/2"	2.23	44.60	1-1/4" X	1-1/2"	6.38	127.60
2"	2.55	51.00	1-3/4"	7.44	148.80	
2-1/4"	2.87	57.40	2"	8.50	170.00	
2-1/2"	3.19	63.80	2-1/4"	9.56	191.20	
2-3/4"	3.51	70.20	2-1/2"	10.63	212.60	
3"	3.83	76.60	2-3/4"	11.69	233.80	
3-1/4"	4.15	83.00	3"	12.75	255.00	
3-1/2"	4.47	89.40	3-1/4"	13.81	276.20	
4"	5.10	102.00	3-1/2"	14.88	297.60	
4-1/2"	5.74	114.80	4"	17.00	340.00	
5"	6.38	127.60	4-1/2"	19.13	382.60	
5-1/2"	7.02	140.40	5"	21.25	425.00	
6"	7.66	153.20	5-1/2"	23.38	467.60	
7"	8.93	178.60	6"	25.50	510.00	
8"	10.21	204.20	7"	29.75	595.00	
9UM	11.49	229.80	8"	34.00	680.00	
10UM	12.76	255.20	1-1/2" X	1-3/4"	8.93	178.60
12UM	15.31	306.20	2"	10.20	204.00	
1/2" X	5/8"	1.06	2-1/4"	11.48	229.60	
3/4"	1.28	25.60	2-1/2"	12.75	255.00	
7/8"	1.49	29.80	2-3/4"	14.03	280.60	
1"	1.70	34.00	3"	15.30	306.00	
1-1/8"	1.91	38.20	3-1/2"	17.85	357.00	
1-1/4"	2.13	42.60	4"	20.40	408.00	
1-3/8"	2.34	46.80	4-1/2"	22.95	459.00	
1-1/2"	2.55	51.00	5"	25.50	510.00	
1-5/8"	2.77	55.40	5-1/2"	28.05	561.00	
1-3/4"	2.98	59.60	6"	30.60	612.00	
2"	3.40	68.00	7"	35.70	714.00	
2-1/4"	3.83	76.60	8"	40.80	816.00	
2-1/2"	4.25	85.00	2" X	2-1/4"	15.30	306.00
2-3/4"	4.68	93.60	2-1/2"	17.00	340.00	
3"	5.10	102.00	3"	20.40	408.00	
3-1/4"	5.53	110.60	3-1/2"	23.80	476.00	
3-1/2"	5.96	119.20	4"	27.20	544.00	
3-3/4"	6.38	127.60	4-1/2"	30.60	612.00	
4"	6.80	136.00	5"	34.00	680.00	
4-1/2"	7.66	153.20	5-1/2"	37.40	748.00	
5"	8.51	170.20	6"	40.80	816.00	
5-1/2"	9.36	187.20	7"	47.60	952.00	
6"	10.20	204.20	8"	54.40	1088.00	
7"	11.91	238.20	2-1/2" X	3"	25.50	510.00
8"	13.61	272.20	3-1/2"	29.75	595.00	
9UM	15.31	306.20	4"	34.00	680.00	
10UM	17.02	340.40	4-1/2"	38.25	765.00	
12UM	20.42	408.40	5"	42.50	850.00	
			6"	51.00	1020.00	
5/8" X	3/4"	1.60	3" X	4"	40.80	816.00
7/8"	1.86	37.20	4-1/2"	45.90	918.00	
1"	2.13	42.60	5"	51.00	1020.00	
1-1/4"	2.66	53.20	6"	61.20	1224.00	
1-3/8"	2.92	58.40				
1-1/2"	3.19	63.80				
1-5/8"	3.46	69.20				
1-3/4"	3.72	74.40				
2"	4.25	85.00				
2-1/4"	4.79	95.80				
2-1/2"	5.32	106.40				
2-3/4"	5.85	117.00				
3"	6.38	127.60				
3-1/4"	6.91	138.20				
3-1/2"	7.44	148.80				
4"	8.51	170.20				
4-1/2"	9.57	191.40				
5"	10.64	212.80				
5-1/2"	11.70	234.00				
6"	12.76	255.20				
7"	14.89	297.80				
8"	17.02	340.40				
9UM	19.14	382.80				
10UM	21.27	425.40				
12UM	25.52	510.40				



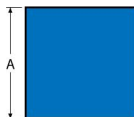
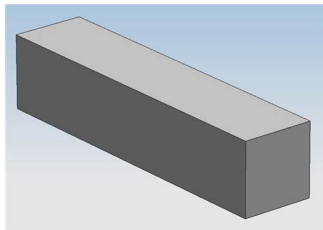
COLD FINISHED ROUNDS - 1018

Size	Wt. Per Lbs.	Wt. For 12' Bar	Size	Wt. Per Lbs.	Wt. For 12' Bar
1/8"	0.042	0.504	2-1/2"	16.690	200.280
5/32"	0.065	0.780	2-9/16"	17.530	210.360
3/16"	0.094	1.130	2-5/8"	18.400	220.800
7/32"	0.128	1.540	2-11/16"	19.290	231.480
1/4"	0.167	2.000	2-3/4"	20.190	242.280
17/64"	0.188	2.260	2-13/16"	21.120	253.440
9/32"	0.211	2.530	2-7/8"	22.070	264.840
5/16"	0.261	3.130	2-15/16"	23.040	276.480
21/64"	0.288	3.460	3"	24.030	288.360
11/32"	0.316	3.790	3-1/16"	25.050	300.600
3/8"	0.376	4.510	3-1/8"	26.080	312.960
25/64"	0.408	4.900	3-3/16"	27.130	325.560
13/32"	0.441	5.290	3-1/4"	28.210	338.520
7/16"	0.511	6.130	3-5/16"	29.300	351.600
15/32"	0.587	7.040	3-3/8"	30.420	365.040
1/2"	0.668	8.020	3-7/16"	31.550	378.600
33/64"	0.710	8.520	3-1/2"	32.710	392.520
17/32"	0.754	9.050	3-9/16"	33.890	406.680
9/16"	0.845	10.140	3-5/8"	35.090	521.080
19/32"	0.941	11.290	3-11/16"	36.310	435.720
5/8"	1.043	12.520	3-3/4"	37.550	450.600
41/64"	1.096	13.150	3-7/8"	40.100	481.200
11/16"	1.262	15.140	3-15/16"	41.400	496.800
23/32"	1.380	16.560	4"	42.730	512.760
3/4"	1.502	18.020	4-1/8"	45.440	545.280
49/64"	1.565	18.780	4-3/16"	46.830	561.960
25/32"	1.630	19.560	4-1/4"	48.230	578.760
13/16"	1.763	21.160	4-3/8"	51.110	613.320
27/32"	1.901	22.810	4-7/16"	52.580	630.960
7/8"	2.045	24.540	4-1/2"	54.080	648.960
57/64"	2.118	25.420	4-9/16"	55.590	667.080
29/32"	2.193	26.320	4-5/8"	57.120	685.440
15/16"	2.347	28.160	4-3/4"	60.250	723.000
1"	2.670	32.040	4-7/8"	63.460	761.520
1-1/16"	3.015	36.180	4-15/16"	65.100	781.200
1-1/8"	3.380	40.560	5"	66.760	801.120
1-3/16"	3.766	45.180	5-1/8"	70.140	841.680
1-1/4"	4.172	50.060	5-1/4"	73.600	883.200
1-5/16"	4.600	55.200	5-3/8"	77.150	925.800
1-3/8"	5.049	60.590	5-7/16"	78.950	947.400
1-7/16"	5.518	66.220	5-1/2"	80.780	969.360
1-1/2"	6.008	72.100	5-5/8"	84.490	1013.880
1-9/16"	6.519	78.230	5-3/4"	88.290	1059.480
1-5/8"	7.051	84.610	5-7/8"	92.170	1106.040
1-11/16"	7.604	91.250	5-15/16"	94.140	1129.680
1-3/4"	8.178	98.140	6"	96.130	1153.560
1-13/16"	8.773	105.280	6-1/8"	100.180	1202.160
1-7/8"	9.388	112.660	6-1/4"	104.310	1251.720
1-15/16"	10.024	120.290	6-1/2"	112.820	1353.840
2"	10.680	128.160	6-3/4"	121.670	1460.040
2-1/16"	11.360	136.320	7"	130.850	1570.200
2-1/8"	12.060	144.720	7-1/4"	140.360	1684.320
2-3/16"	12.780	153.360	7-1/2"	150.210	1802.520
2-1/4"	13.520	162.240	8"	170.900	2050.800
2-5/16"	14.280	171.360	8-1/2"	192.930	2315.160
2-3/8"	15.060	182.720	9"	216.300	2595.600
2-7/16"	15.870	190.440	10"	267.000	3204.000
			12"	384.530	4614.360



COLD FINISHED SQUARES

Size	Wt. Per Ft. Lbs	Wt. For 12' Bar
1/8"	0.05	0.64
5/32"	0.08	1.00
3/16"	0.12	1.44
7/32"	0.16	1.96
1/4"	0.21	2.56
9/32"	0.27	3.23
5/16"	0.33	3.98
11/32"	0.40	4.82
3/8"	0.48	5.74
7/16"	0.65	7.81
1/2"	0.85	10.20
9/16"	1.08	12.91
5/8"	1.33	15.95
11/16"	1.61	19.30
3/4"	1.91	22.97
13/16"	2.25	26.95
7/8"	2.61	31.26
15/16"	2.99	35.88
1"	3.40	40.82
1-1/16"	3.84	46.09
1-1/8"	4.31	51.67
1-3/16"	4.80	57.58
1-1/4"	5.32	63.79
1-5/16"	5.86	70.33
1-3/8"	6.43	77.18
1-7/16"	7.03	84.36
1-1/2"	7.66	91.86
1-9/16"	8.31	99.67
1-5/8"	8.98	107.81
1-3/4"	10.42	125.03
1-7/8"	11.95	143.40
2"	13.60	163.20
2-1/8"	15.35	184.20
2-1/4"	17.22	206.64
2-3/8"	19.18	230.16
2-1/2"	21.26	255.12
2-5/8"	23.43	281.16
2-3/4"	25.73	308.76
2-7/8"	28.10	337.20
3"	30.60	367.20
3-1/4"	35.91	430.92
3-1/2"	41.65	499.80
3-3/4"	47.81	573.72
4"	54.40	625.80
4-1/2"	68.85	826.20
5"	85.00	1020.00
5-1/2"	102.85	1234.20
6"	122.40	1468.20

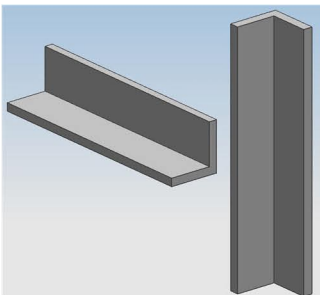


COLD FINISHED FLAT BARS

Size	Wt. Per Ft. Lbs.	Lbs. For 12' Bar	Size	Wt. Per Ft. Lbs.	Lbs. For 12' Bar	Size	Wt. Per Ft. Lbs.	Lbs. For 12' Bar
1/8 x			1/2 x			1 1/4 x		
3/16	0.800	0.96	9/16	0.956	11.47	1 3/8	5.840	70.13
1/4	0.106	1.27	1 1/8	1.063	12.76	1 1/2	6.380	76.56
5/16	0.133	1.60	1 1/16	1.169	14.03	1 5/8	6.910	82.87
3/8	0.159	1.91	3/4	1.275	15.30	1 3/4	7.440	89.26
7/16	0.186	2.23	13/16	1.381	16.58	1 7/8	7.970	95.63
1/2	0.213	2.56	7/8	1.486	17.84	2 1/4	9.560	114.76
9/16	0.239	2.87	1	1.700	20.40	2 1/2	10.630	127.50
5/8	0.266	3.19	1 1/8	1.910	22.96	2 3/4	11.690	140.26
11/16	0.292	3.52	1 1/4	2.130	25.50	3	12.750	153.00
3/4	0.319	3.83	1 3/8	2.340	28.04	3 1/4	13.810	165.72
7/8	0.372	4.46	1 1/2	2.550	30.60	3 1/2	14.880	178.50
1	0.425	5.10	1 5/8	2.760	33.16	3 3/4	15.940	191.28
1 1/8	0.478	5.74	1 3/4	2.980	35.70	4	17.000	204.00
1 1/4	0.531	6.37	2	3.400	40.80	4 1/2	19.130	229.56
1 3/8	0.584	7.01	2 1/4	3.830	45.90	5	21.250	255.00
1 1/2	0.638	7.66	2 1/2	4.250	51.00	5 1/2	23.370	280.44
1 3/4	0.744	8.91	2 3/4	4.680	56.10	6	25.500	306.00
2	0.850	10.20	3	5.100	61.20	8	34.000	408.00
2 1/4	0.956	11.47	3 1/4	5.530	66.30	10	42.500	510.00
2 1/2	1.060	12.76	3 1/2	5.950	71.40	12	51.000	612.00
2 3/4	1.170	14.03	3 3/4	6.380	76.56			
3	1.280	15.30	4	6.800	81.60			
3 1/2	1.490	17.80	4 1/4	7.230	86.76			
3 3/4	1.590	19.13	4 1/2	7.650	91.80			
4	1.700	20.40	4 3/4	8.080	96.96			
4 1/2	1.910	22.96	5	8.500	102.00			
5	2.130	25.50	5 1/2	8.930	107.20			
6	2.550	30.60	5 3/4	9.360	112.32			
			6	10.200	122.40			
			7	11.900	142.80			
			8	13.600	163.20			
			9	15.300	183.60			
			10	17.000	204.00			
			11	18.700	224.40			
			12	20.400	244.80			
3/16 x			5/8 x					
1/4	0.159	1.91	11/16	1.460	17.53			
5/16	0.199	2.39	3/4	1.590	19.13			
3/8	0.239	2.87	13/16	1.716	20.72			
7/16	0.279	3.35	7/8	1.860	22.31			
1/2	0.319	3.83	1	2.130	25.50			
9/16	0.359	4.31	1 1/8	2.390	28.69			
5/8	0.398	4.78	1 1/4	2.660	31.87			
3/4	0.478	5.74	1 3/8	2.920	35.06			
7/8	0.558	6.70	1 1/2	3.190	38.20			
1	0.638	7.66	1 5/8	3.450	41.44			
1 1/8	0.717	8.60	1 3/4	3.720	44.63			
1 1/4	0.797	9.56	2	4.250	51.00			
1 3/8	0.877	10.52	2 1/4	4.780	57.37			
1 1/2	0.956	11.47	2 1/2	5.310	63.76			
1 3/4	1.120	13.39	2 3/4	5.840	70.13			
1 7/8	1.200	14.40	3	6.380	76.50			
2	1.280	15.30	3 1/4	6.910	82.87			
2 1/4	1.430	17.21	3 1/2	7.440	89.26			
2 1/2	1.590	19.13	3 3/4	7.970	95.63			
2 3/4	1.750	21.04	4	8.500	102.00			
3	1.910	22.96	4 1/2	9.560	114.76			
3 1/4	2.070	24.86	4 3/4	10.630	127.50			
3 1/2	2.230	26.77	5	11.690	140.26			
3 3/4	2.390	28.68	6	12.750	153.00			
4	2.550	30.60	7	14.880	178.50			
4 1/2	2.870	34.42	8	17.000	204.00			
5	3.190	38.26	9	19.130	229.56			
5 1/8	3.830	45.90	10	21.250	255.00			
8	5.100	61.20	11	23.370	280.44			
10	6.380	76.50	12	25.500	306.00			
1/4 x			3/4 x					
5/16	0.266	3.19	7/8	2.230	26.77			
3/8	0.319	3.83	1	2.550	30.60			
7/16	0.372	4.46	1 1/8	2.870	34.43			
1/2	0.425	5.10	1 1/4	3.190	38.26			
9/16	0.478	5.74	1 3/8	3.510	42.07			
5/8	0.531	6.37	1 1/2	3.830	45.90			
11/16	0.584	7.01	1 3/4	4.140	49.73			
3/4	0.638	7.66	1 5/8	4.460	53.56			
7/8	0.744	8.91	2	5.100	61.20			
1	0.850	10.20	2 1/4	5.740	68.80			
1 1/8	0.956	11.47	2 1/2	6.380	76.50			
1 1/4	1.063	12.76	2 3/4	7.010	84.16			
1 3/8	1.169	14.03	3	7.650	91.80			
1 1/2	1.275	15.30	3 1/4	8.290	99.46			
1 3/4	1.381	16.57	3 1/2	8.930	107.10			
1 3/4	1.490	17.84	3 3/4	9.560	114.76			
2	1.700	20.40	4	10.200	122.40			
2 1/4	1.913	22.96	4 1/2	11.480	137.70			
2 1/2	2.125	25.50	5	12.750	153.00			
2 3/4	2.338	28.06	6	14.030	168.30			
3	2.550	30.60	7	15.300	183.60			
3 1/4	2.763	33.12	8	16.580	198.96			
3 1/2	2.975	35.70	9	17.850	214.20			
3 3/4	3.188	38.26	10	19.130	229.56			
4	3.400	40.80	11	20.400	244.80			
4 1/2	3.825	45.90	12	21.670	260.04			
4 3/4	4.038	48.46						
5	4.250	51.00						
5 1/2	4.675	56.10						
6	5.100	61.20						
6 1/2	5.525	66.30						
7	5.950	71.40						
8	6.800	81.60						
9	7.650	91.80						
10	8.500	102.00						
11	9.350	112.20						
12	10.200	122.40						
5/16 x			7/8 x					
3/8	0.398	4.78	1	2.980	35.70			
7/16	0.465	5.58	1 1/8	3.190	40.16			
1/2	0.531	6.37	1 1/4	3.720	44.63			
9/16	0.598	7.18	1 3/4	4.250	51.00			
5/8	0.664	7.97	2	5.100	61.20			
3/4	0.797	9.56	2 1/4	6.690	80.33			
7/8	0.930	11.16	2 1/2	7.440	89.26			
1	1.063	12.76	2 3/4	8.180	98.17			
1 1/8	1.195	14.34	3	8.930	107.10			
1 1/4	1.328	15.94	3 1/2	10.210	124.96			
1 3/8	1.461	17.53	4	11.900	142.80			
1 1/2	1.594	19.13	4 1/2	13.390	160.66			
1 3/4	1.859	22.31	5	14.880	178.50			
2	2.125	25.50	5 1/2	16.360	196.32			
2 1/4	2.391	28.69	6	17.850	214.20			
2 1/2	2.656	31.87	8	23.800	285.10			
2 3/4	2.922	35.06	10	29.750	357.00			
3	3.188	38.26	11	30.600	367.20			
3 1/4	3.453	41.45						
3 1/2	3.719	44.63						
4	4.250	51.00						
4 1/2	4.781	57.37						
5	5.313	63.76						
6	6.375	76.50						
7	7.438	89.26						
8	8.500	102.00						
10	10.625	127.50						
12	12.750	153.00						
3/8 x			1 x					
7/16	0.558	6.70	1 1/8	3.380	40.80			
1/2	0.638	7.66	1 1/4	4.250	51.00			
9/16	0.717	8.60	1 3/8	4.680	56.10			
5/8	0.797	9.56	1 1/2	5.100	61.20			
11/16	0.877	10.52	1 3/4	5.530	66.30			
3/4	0.956	11.47	2	6.380	76.50			
7/8	1.116	13.39	2 1/4	7.650	91.80			
1	1.275	15.30	2 1/2	8.500	102.00			
1 1/8	1.434	17.21	2 3/4	9.350	112.20			
1 1/4	1.594	19.13	3	10.200	122.40			

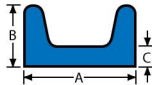
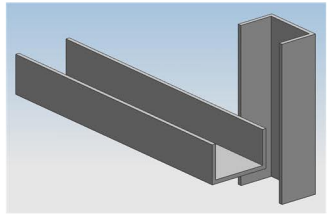
STRUCTURAL ANGLES

Size in Inches	Wt. Per Ft. in Lbs	Wt. Per 20' Length
1/2 x 1/2		
1/8	0.38	7.60
3/4 x 3/4		
1/8	0.59	11.80
1 x 1		
1/8	0.80	16.00
3/16	1.16	23.20
1/4	1.49	29.80
1-1/4 x 1-1/4		
1/8	1.01	20.20
3/16	1.48	29.60
1/4	1.92	38.40
1-1/2 x 1-1/4		
3/16	1.64	32.80
1-1/2 x 1-1/2		
1/8	1.23	24.60
3/16	1.80	36.00
1/4	2.34	46.80
1-3/4 x 1-1/4		
1/8	1.23	24.60
3/16	1.80	36.00
1-3/4 x 1-3/4		
1/8	1.44	28.80
3/16	2.12	42.40
1/4	2.77	55.40
2 x 1-1/4		
3/16	1.96	39.20
1/4	2.55	51.00
2 x 1-1/2		
1/8	1.44	28.80
3/16	2.12	42.40
1/4	2.77	55.40
2 x 2		
1/8	1.65	33.00
3/16	2.44	48.80
1/4	3.19	63.80
5/16	3.92	78.40
3/8	4.70	94.00
2-1/4 x 1-1/2		
3/16	2.28	45.60
2-1/2 x 1-1/2		
3/16	2.44	48.80
1/4	3.19	63.80
5/16	3.92	78.40
2-1/2 x 2		
3/16	2.75	55.00
1/4	3.62	72.40
5/16	4.50	90.00
3/8	5.30	106.00
2-1/2 x 2-1/2		
3/16	3.07	61.40
1/4	4.10	82.00
5/16	5.00	100.00
3/8	5.90	118.00
1/2	7.70	154.00
3 x 2		
3/16	3.07	61.40
1/4	4.10	82.00
5/16	5.00	100.00
3/8	5.90	118.00
1/2	7.70	154.00
3 x 2-1/2		
1/4	4.50	90.00
5/16	5.60	112.00
3/8	6.60	132.00
1/2	8.50	170.00
3 x 3		
3/16	3.71	74.20
1/4	4.90	98.00
5/16	6.10	122.00
3/8	7.20	144.00
7/16	8.30	166.00
1/2	9.40	188.00
3-1/2 x 2-1/2		
1/4	4.90	98.00
5/16	6.10	122.00
3/8	7.20	144.00
1/2	9.40	188.00
3-1/2 x 3		
1/4	5.40	108.00
5/16	6.60	132.00
3/8	7.90	158.00
1/2	10.20	204.00
3-1/2 x 3-1/2		
1/4	5.80	116.00
5/16	7.20	144.00
3/8	8.50	170.00
7/16	9.80	196.00
1/2	11.10	222.00
4 x 3		
1/4	5.80	116.00
5/16	7.20	144.00
3/8	8.50	170.00
7/16	9.80	196.00
1/2	11.10	222.00
5/8	13.60	272.00
4 x 3-1/2		
1/4	6.20	124.00
5/16	7.70	154.00
3/8	9.10	182.00
7/16	10.60	212.00
1/2	11.90	238.00
5/8	14.70	294.00
4 x 4		
1/4	6.60	132.00
5/16	8.20	164.00
3/8	9.80	196.00
7/16	11.30	226.00
1/2	12.80	256.00
5/8	15.70	314.00
3/4	18.50	370.00
5 x 3		
1/4	6.60	132.00
5/16	8.20	164.00
3/8	9.80	196.00
1/2	12.80	256.00
5 x 3-1/2		
1/4	7.00	140.00
5/16	8.70	174.00
3/8	10.40	208.00
7/16	12.00	240.00
1/2	13.60	272.00
5/8	16.80	336.00
3/4	19.80	396.00
5 x 5		
5/16	10.30	206.00
3/8	12.30	246.00
1/2	16.20	324.00
5/8	20.00	400.00
3/4	23.60	472.00
6 x 3-1/2		
5/16	9.80	196.00
3/8	11.70	234.00
1/2	15.30	306.00
6 x 4		
5/16	10.30	206.00
3/8	12.30	246.00
7/16	14.30	286.00
1/2	16.20	324.00
5/8	20.00	400.00
3/4	23.60	472.00
7/8	27.20	544.00
6 x 6		
3/8	14.90	298.00
1/2	19.60	392.00
5/8	24.20	484.00
3/4	28.70	574.00
7/8	33.10	662.00
1	37.40	748.00
7 x 4		
3/8	13.60	272.00
7/16	15.80	316.00
1/2	17.90	358.00
5/8	22.10	442.00
3/4	26.20	524.00
8 x 4		
1/2	19.60	392.00
5/8	24.20	484.00
3/4	28.70	574.00
8 x 6		
1/2	23.00	460.00
5/8	28.50	570.00
3/4	33.80	676.00
1	44.20	884.00
8 x 8		
1/2	26.40	528.00
5/8	32.70	654.00
3/4	38.90	778.00
1	51.00	1020.00



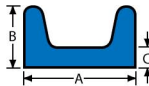
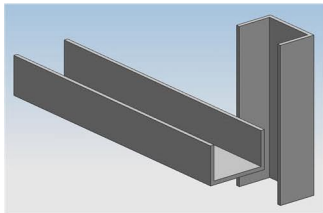
STRUCTURAL CHANNELS

"D" Depth of Channel & Wt. (LBS) Per Ft.	Wt. For 20'	"Wt" Thickness of Web in Inches	"FW" Width of Flange in Inches
3" x	70	0.140	1.360
4.10	82	0.170	1.410
5.00	100	0.258	1.498
6.00	120	0.356	1.596
4" x	90	0.145	1.520
5.40	108	0.180	1.580
6.25	125	0.247	1.647
7.25	145	0.320	1.720
5" x	134	0.190	1.750
9.00	180	0.325	1.885
6" x	164	0.200	1.920
10.50	210	0.314	2.034
13.00	260	0.437	2.157
7" x	196	0.210	2.090
12.25	245	0.314	2.194
14.75	295	0.419	2.299
8" x	170	0.180	1.875
11.50	230	0.220	2.260
13.75	275	0.303	2.343
18.75	375	0.487	2.527
9" x	268	0.230	2.430
15.00	300	0.285	2.485
20.00	400	0.448	2.648
10" x	306	0.240	2.600
20.00	400	0.379	2.739
25.00	500	0.526	2.886
30.00	600	0.673	3.033
12" x	414	0.280	2.940
25.00	500	0.387	3.047
30.00	600	0.510	3.170
15" x	678	0.400	3.400
40.00	800	0.520	3.520
50.00	1000	0.716	3.716



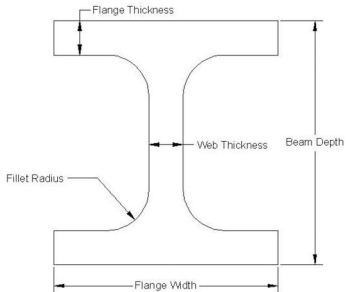
SHIP & CAR CHANNELS

"D" Depth of Channel & Wt. (LBS) Per Ft.	Wt. For 20'	"Wt" Thickness of Web in Inches	"FW" Width of Flange in Inches	
3" x 7.10	142	0.313	1.938	
4" x 13.80	276	0.500	2.500	
6" x	12.00	240	0.313	2.500
	15.10	302	0.316	2.941
	15.30	306	0.340	3.500
	16.30	326	0.375	3.000
	18.00	360	0.375	3.500
7" x	17.60	352	0.375	3.000
	19.10	382	0.350	3.450
	22.70	454	0.500	3.600
8" x	18.70	374	0.350	2.975
	20.00	400	0.400	3.025
	21.40	428	0.375	3.450
	22.80	456	0.425	3.500
9" x 25.40	508	0.450	3.500	
10" x	22.00	440	0.290	3.315
	25.00	500	0.375	3.400
	28.00	570	0.425	3.950
12" x	31.00	620	0.370	3.670
	35.00	700	0.467	3.767
	45.00	900	0.712	4.012
	50.00	1000	0.835	4.135
13" x	31.80	636	0.375	4.000
	50.00	1000	0.787	4.412
18" x	42.70	854	0.450	3.950
	45.80	916	0.500	4.000
	58.00	1160	0.700	4.200



STANDARD I BEAMS

"D" Depth of Channel & Wt. (LBS) Per Ft.	Wt. For 20'	"Wt" Thickness of Web in Inches	"FW" Width of Flange in Inches
3" x	5.70	0.170	2.330
	7.50	0.349	2.509
4" x	7.70	0.190	2.660
	9.50	0.326	2.796
5" x	10.00	0.210	3.000
	14.75	0.494	3.284
6" x	12.50	0.230	3.330
	17.25	0.465	3.565
7" x	15.30	0.250	3.660
	20.00	0.450	3.860
8" x	18.40	0.270	4.000
	23.00	0.441	4.171
10" x	25.40	0.310	4.660
	35.00	0.594	4.944
12" x	31.80	0.350	5.000
	35.00	0.428	5.078
	40.80	0.460	5.250
	50.00	0.687	5.477
15" x	42.90	0.410	5.500
	50.00	0.550	5.640
18" x	54.70	0.460	6.000
	70.00	0.711	6.251
20" x	66.00	0.505	6.255
24" x	80.00	0.500	7.000
	100.00	0.747	7.247
	106.00	0.250	7.875



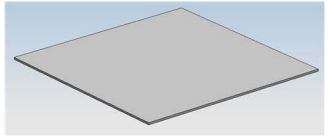
Available in 20', 30', 40', 50', 55', 60'

WIDE FLANGE & "H" BEAMS

Section Size and Weight (lb/ft) per foot	Flt. For 40° Beams	Depth of Section in Inches	Flange in Inches			Web Thickness inches	Section Size and Weight (lb/ft) per foot	Flt. For 40° Beams	Depth of Section in Inches	Flange in Inches			Web Thickness inches	Area, Sq. In.
			"T" Flange	"T" Flange	"T" Flange					"T" Flange	"T" Flange	"T" Flange		
4 x 13	10	4.50	4.06	0.45	0.280	1.83	50 x 26	1040	11.690	5.500	0.345	0.250	7.68	
5 x 16	14.0	5.010	3.900	0.360	0.240	4.71	31	1400	11.880	5.525	0.440	0.275	9.12	
6 x 19	17.0	5.150	3.940	0.250	0.270	5.16	36	1440	11.860	5.600	0.440	0.290	10.40	
8 x 24	22.0	5.900	3.840	0.315	0.170	2.68	40	1600	11.610	6.995	0.500	0.395	11.80	
12 x 40	6.20	6.000	4.000	0.280	0.240	1.87	61	1800	11.610	7.025	0.565	0.345	13.30	
15 x 50	5.90	5.990	3.960	0.230	0.41	4.1	50	2000	11.620	7.070	0.630	0.380	14.70	
16 x 60	6.20	6.200	4.030	0.265	0.260	4.24	57	2200	11.430	7.120	0.715	0.430	16.80	
18 x 70	6.20	6.200	4.030	0.265	0.260	4.24	67	2400	11.520	7.125	0.665	0.390	17.90	
25 x 100	6.30	6.300	4.00	0.455	0.320	3.4	77	3000	11.520	10.395	0.760	0.455	22.60	
30 x 120	6.30	6.300	4.00	0.455	0.320	3.4	90	3600	11.520	10.360	0.875	0.525	26.20	
36 x 150	6.30	6.300	4.00	0.455	0.320	3.4	100	4000	11.570	10.425	0.985	0.585	29.40	
40 x 180	6.30	6.300	4.00	0.455	0.320	3.4	110	4400	11.570	10.425	0.985	0.585	29.40	
48 x 240	6.30	6.300	4.00	0.455	0.320	3.4	130	5200	11.570	10.425	0.985	0.585	29.40	
54 x 290	6.30	6.300	4.00	0.455	0.320	3.4	140	5600	11.570	10.425	0.985	0.585	29.40	
60 x 340	6.30	6.300	4.00	0.455	0.320	3.4	150	6000	11.570	10.425	0.985	0.585	29.40	
66 x 390	6.30	6.300	4.00	0.455	0.320	3.4	160	6400	11.570	10.425	0.985	0.585	29.40	
72 x 440	6.30	6.300	4.00	0.455	0.320	3.4	170	6800	11.570	10.425	0.985	0.585	29.40	
78 x 490	6.30	6.300	4.00	0.455	0.320	3.4	180	7200	11.570	10.425	0.985	0.585	29.40	
84 x 540	6.30	6.300	4.00	0.455	0.320	3.4	190	7600	11.570	10.425	0.985	0.585	29.40	
90 x 590	6.30	6.300	4.00	0.455	0.320	3.4	200	8000	11.570	10.425	0.985	0.585	29.40	
96 x 640	6.30	6.300	4.00	0.455	0.320	3.4	210	8400	11.570	10.425	0.985	0.585	29.40	
102 x 690	6.30	6.300	4.00	0.455	0.320	3.4	220	8800	11.570	10.425	0.985	0.585	29.40	
108 x 740	6.30	6.300	4.00	0.455	0.320	3.4	230	9200	11.570	10.425	0.985	0.585	29.40	
114 x 790	6.30	6.300	4.00	0.455	0.320	3.4	240	9600	11.570	10.425	0.985	0.585	29.40	
120 x 840	6.30	6.300	4.00	0.455	0.320	3.4	250	10000	11.570	10.425	0.985	0.585	29.40	
126 x 890	6.30	6.300	4.00	0.455	0.320	3.4	260	10400	11.570	10.425	0.985	0.585	29.40	
132 x 940	6.30	6.300	4.00	0.455	0.320	3.4	270	10800	11.570	10.425	0.985	0.585	29.40	
138 x 990	6.30	6.300	4.00	0.455	0.320	3.4	280	11200	11.570	10.425	0.985	0.585	29.40	
144 x 1040	6.30	6.300	4.00	0.455	0.320	3.4	290	11600	11.570	10.425	0.985	0.585	29.40	
150 x 1090	6.30	6.300	4.00	0.455	0.320	3.4	300	12000	11.570	10.425	0.985	0.585	29.40	
156 x 1140	6.30	6.300	4.00	0.455	0.320	3.4	310	12400	11.570	10.425	0.985	0.585	29.40	
162 x 1190	6.30	6.300	4.00	0.455	0.320	3.4	320	12800	11.570	10.425	0.985	0.585	29.40	
168 x 1240	6.30	6.300	4.00	0.455	0.320	3.4	330	13200	11.570	10.425	0.985	0.585	29.40	
174 x 1290	6.30	6.300	4.00	0.455	0.320	3.4	340	13600	11.570	10.425	0.985	0.585	29.40	
180 x 1340	6.30	6.300	4.00	0.455	0.320	3.4	350	14000	11.570	10.425	0.985	0.585	29.40	
186 x 1390	6.30	6.300	4.00	0.455	0.320	3.4	360	14400	11.570	10.425	0.985	0.585	29.40	
192 x 1440	6.30	6.300	4.00	0.455	0.320	3.4	370	14800	11.570	10.425	0.985	0.585	29.40	
198 x 1490	6.30	6.300	4.00	0.455	0.320	3.4	380	15200	11.570	10.425	0.985	0.585	29.40	
204 x 1540	6.30	6.300	4.00	0.455	0.320	3.4	390	15600	11.570	10.425	0.985	0.585	29.40	
210 x 1590	6.30	6.300	4.00	0.455	0.320	3.4	400	16000	11.570	10.425	0.985	0.585	29.40	
216 x 1640	6.30	6.300	4.00	0.455	0.320	3.4	410	16400	11.570	10.425	0.985	0.585	29.40	
222 x 1690	6.30	6.300	4.00	0.455	0.320	3.4	420	16800	11.570	10.425	0.985	0.585	29.40	
228 x 1740	6.30	6.300	4.00	0.455	0.320	3.4	430	17200	11.570	10.425	0.985	0.585	29.40	
234 x 1790	6.30	6.300	4.00	0.455	0.320	3.4	440	17600	11.570	10.425	0.985	0.585	29.40	
240 x 1840	6.30	6.300	4.00	0.455	0.320	3.4	450	18000	11.570	10.425	0.985	0.585	29.40	
246 x 1890	6.30	6.300	4.00	0.455	0.320	3.4	460	18400	11.570	10.425	0.985	0.585	29.40	
252 x 1940	6.30	6.300	4.00	0.455	0.320	3.4	470	18800	11.570	10.425	0.985	0.585	29.40	
258 x 1990	6.30	6.300	4.00	0.455	0.320	3.4	480	19200	11.570	10.425	0.985	0.585	29.40	
264 x 2040	6.30	6.300	4.00	0.455	0.320	3.4	490	19600	11.570	10.425	0.985	0.585	29.40	
270 x 2090	6.30	6.300	4.00	0.455	0.320	3.4	500	20000	11.570	10.425	0.985	0.585	29.40	
276 x 2140	6.30	6.300	4.00	0.455	0.320	3.4	510	20400	11.570	10.425	0.985	0.585	29.40	
282 x 2190	6.30	6.300	4.00	0.455	0.320	3.4	520	20800	11.570	10.425	0.985	0.585	29.40	
288 x 2240	6.30	6.300	4.00	0.455	0.320	3.4	530	21200	11.570	10.425	0.985	0.585	29.40	
294 x 2290	6.30	6.300	4.00	0.455	0.320	3.4	540	21600	11.570	10.425	0.985	0.585	29.40	
300 x 2340	6.30	6.300	4.00	0.455	0.320	3.4	550	22000	11.570	10.425	0.985	0.585	29.40	
306 x 2390	6.30	6.300	4.00	0.455	0.320	3.4	560	22400	11.570	10.425	0.985	0.585	29.40	
312 x 2440	6.30	6.300	4.00	0.455	0.320	3.4	570	22800	11.570	10.425	0.985	0.585	29.40	
318 x 2490	6.30	6.300	4.00	0.455	0.320	3.4	580	23200	11.570	10.425	0.985	0.585	29.40	
324 x 2540	6.30	6.300	4.00	0.455	0.320	3.4	590	23600	11.570	10.425	0.985	0.585	29.40	
330 x 2590	6.30	6.300	4.00	0.455	0.320	3.4	600	24000	11.570	10.425	0.985	0.585	29.40	
336 x 2640	6.30	6.300	4.00	0.455	0.320	3.4	610	24400	11.570	10.425	0.985	0.585	29.40	
342 x 2690	6.30	6.300	4.00	0.455	0.320	3.4	620	24800	11.570	10.425	0.985	0.585	29.40	
348 x 2740	6.30	6.300	4.00	0.455	0.320	3.4	630	25200	11.570	10.425	0.985	0.585	29.40	
354 x 2790	6.30	6.300	4.00	0.455	0.320	3.4	640	25600	11.570	10.425	0.985	0.585	29.40	
360 x 2840	6.30	6.300	4.00	0.455	0.320	3.4	650	26000	11.570	10.425	0.985	0.585	29.40	
366 x 2890	6.30	6.300	4.00	0.455	0.320	3.4	660	26400	11.570	10.425	0.985	0.585	29.40	
372 x 2940	6.30	6.300	4.00	0.455	0.320	3.4	670	26800	11.570	10.425	0.985	0.585	29.40	
378 x 2990	6.30	6.300	4.00	0.455	0.320	3.4	680	27200	11.570	10.425	0.985	0.585	29.40	
384 x 3040	6.30	6.300	4.00	0.455	0.320	3.4	690	27600	11.570	10.425	0.985	0.585	29.40	
390 x 3090	6.30	6.300	4.00	0.455	0.320	3.4	700	28000	11.570	10.425	0.985	0.585	29.40	
396 x 3140	6.30	6.300	4.00	0.455	0.320	3.4	710	28400	11.570	10.425	0.985	0.585	29.40	
402 x 3190	6.30	6.300	4.00	0.455	0.320	3.4	720	28800	11.570	10.425	0.985	0.585	29.40	
408 x 3240	6.30	6.300	4.00	0.455	0.320	3.4	730	29200	11.570	10.425	0.985	0.585	29.40	
414 x 3290	6.30	6.300	4.00	0.455	0.320	3.4	740	29600	11.570	10.425	0.985	0.585	29.40	
420 x 3340	6.30	6.300	4.00	0.455	0.320	3.4	750	30000	11.570	10.425	0.985	0.585	29.40	
426 x 3														

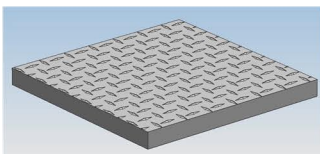
HOT ROLLED SHEETS

Thickness	Sheet Size	Wt. Per Sq. Ft.
7 GAUGE (.1793)		7.5
	36 X 96	
	36 X 120	
	36 X 144	
	36 X 240	
	48 X 96	
	48 X 120	
	48 X 144	
	48 X 240	
	60 X 96	
	60 X 120	
	60 X 144	
	60 X 240	
	72 X 96	
72 X 120		
72 X 144		
72 X 240		
10 GAUGE (.1345)		5.625
	36 X 96	
	36 X 120	
	36 X 144	
	48 X 96	
	48 X 120	
	48 X 144	
	60 X 96	
	60 X 120	
	60 X 144	
	60 X 168	
	72 X 96	
	72 X 120	
	72 X 144	
84 X 120		
11 GAUGE (.1196)		5
	36 X 96	
	36 X 120	
	36 X 144	
	48 X 96	
	48 X 120	
	48 X 144	
	60 X 96	
	60 X 120	
	60 X 144	
	60 X 168	
	60 X 190	
	72 X 120	
	72 X 144	
12 GAUGE (.1046)		4.375
	36 X 96	
	36 X 120	
	36 X 144	
	48 X 96	
	48 X 120	
	48 X 144	
	60 X 96	
	60 X 120	
	60 X 144	
	72 X 96	
72 X 120		
72 X 144		
14 GAUGE (.0747)		3.125
	36 X 96	
	36 X 120	
	36 X 144	
	48 X 96	
	48 X 120	
	48 X 144	
	60 X 96	
	60 X 120	
	60 X 144	
	72 X 120	
72 X 144		
16 GAUGE (.0598)		2.5
	36 X 96	
	36 X 120	
	36 X 144	
	48 X 96	
	48 X 120	
	48 X 144	
	60 X 96	
	60 X 120	
	60 X 144	
72 X 120		
72 X 144		
18 GAUGE (.0478)		2
	36 X 96	
	36 X 120	
	48 X 96	
	48 X 120	
20 GAUGE (.0359)		1.5
	48 X 96	
	48 X 120	
	60 X 96	
	60 X 120	



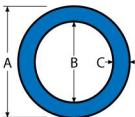
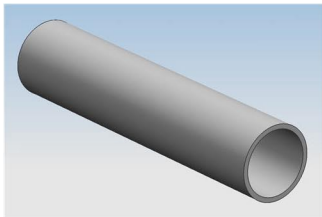
FLOOR PLATE

Thickness	Size	Wt. Per Sq. Ft.	Wt. Per Plate
14 GAUGE		3.75	
	48 X 96		120.00
	48 X 120		150.00
	60 X 120		187.50
	72 X 120		225.00
	84 X 120		262.50
96 X 120		300.00	
1/8"		6.16	
	48 X 96		197.12
	48 X 120		246.40
	48 X 144		295.68
	60 X 120		308.00
	72 X 120		369.60
84 X 120		431.20	
96 X 120		492.80	
3/16"		8.71	
	48 X 96		278.72
	48 X 120		348.40
	48 X 144		418.08
	48 X 240		696.08
	60 X 120		435.50
	60 X 144		522.60
	60 X 240		871.00
	72 X 120		522.60
	72 X 240		1045.20
	84 X 120		609.70
	84 X 240		1219.40
96 X 120		696.80	
96 X 240		1393.60	
1/4"		11.26	
	48 X 96		360.32
	48 X 120		450.40
	48 X 144		540.48
	48 X 240		900.80
	60 X 120		563.00
	60 X 240		1126.00
	72 X 120		675.60
	72 X 240		1351.20
	84 X 120		788.20
	84 X 240		1576.40
	96 X 120		900.80
96 X 240		1801.60	
5/16"		13.81	
	48 X 120		552.40
	48 X 240		1104.80
	60 X 120		690.50
	60 X 240		1381.00
	72 X 120		828.60
	72 X 240		1657.20
	84 X 120		966.70
	84 X 240		1933.40
96 X 120		1104.80	
96 X 240		2209.60	
3/8"		16.37	
	48 X 96		5323.84
	48 X 120		654.80
	48 X 144		785.76
	48 X 240		1309.60
	60 X 120		818.50
	60 X 240		1637.00
	72 X 120		982.20
	72 X 240		1964.40
	84 X 120		1145.90
	84 X 240		2291.80
	96 X 120		1309.60
96 X 240		2619.20	
1/2"		21.47	
	48 X 96		687.04
	48 X 120		858.80
	48 X 240		1717.60
	60 X 120		1073.50
	60 X 240		2147.00
	72 X 120		1288.20
	72 X 240		2576.40
	84 X 120		1502.90
	84 X 240		3005.80
96 X 120		1717.60	
96 X 240		3435.20	
5/8"		26.58	
	48 X 120		1063.20
	60 X 120		1329.00
	60 X 240		2658.00
	72 X 120		1594.80
	72 X 240		3189.60
	84 X 120		1860.60
	84 X 240		3721.20
96 X 120		2126.40	
96 X 240		4252.80	
3/4"		31.68	
	48 X 120		1267.20
	60 X 120		1584.00
	60 X 240		3168.00
	72 X 120		1900.00
	72 X 240		3801.60
	84 X 120		2217.60
	84 X 240		4435.20
96 X 120		2534.40	
96 X 240		5068.80	
1"		41.89	
	48 X 120		1675.60
	60 X 120		2094.50
	60 X 240		4189.00
	72 X 120		2513.40
	72 X 240		5026.80
	84 X 120		2932.30
	84 X 240		5864.60
	96 X 120		3351.20
	96 X 240		6702.40



WELDED PIPE - PLAIN ENDS

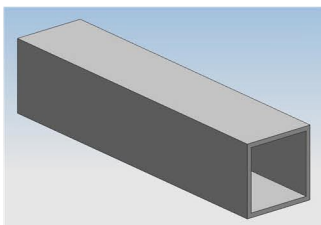
Nom. Size	Schedule	Wt. Per Ft.	Wall Thickness	Size O.D.	Size I.D.
1/8"	40	0.24	0.068	0.405	0.269
	80	0.42	0.088		0.364
1/4"	40	0.54	0.119	0.540	0.302
	80	0.57	0.091	0.675	0.493
3/8"	40	0.74	0.126		0.423
	80	0.85	0.109	0.840	0.622
1/2"	40	1.09	0.147		0.546
	80	1.13	0.113	1.050	0.824
3/4"	40	1.47	0.154		0.742
	80	1.41	0.109	1.315	1.097
1"	40	1.68	0.133		1.049
	80	2.17	0.179	1.660	0.957
1-1/4"	10	1.81	0.109		1.442
	40	2.27	0.140	1.900	1.380
1-1/2"	40	3.00	0.191		1.278
	80	2.09	0.109	2.375	1.682
2"	40	2.72	0.145		1.610
	80	3.63	0.220	2.875	1.500
2-1/2"	40	3.65	0.154		2.067
	80	5.02	0.218	3.500	1.939
3"	40	5.79	0.203		2.469
	80	7.66	0.276	4.000	2.323
3-1/2"	40	7.58	0.216		3.068
	80	10.25	0.300	4.500	2.900
4"	40	9.11	0.226		3.548
	80	12.51	0.318	6.625	3.364
5"	40	10.79	0.237		4.026
	80	14.98	0.337	8.625	3.826
6"	40	14.62	0.258		5.047
	80	20.78	0.375	10.750	4.813
8"	10	9.29	0.013		6.357
	40	18.97	0.280	6.625	6.065
10"	40	28.57	0.432		5.761
	80	28.55	0.322	8.625	7.981
12"	40	43.39	0.500		7.625
	80	40.48	0.365	10.750	10.020
14"	40	64.43	0.594		9.562
	80	53.52	0.406	12.750	11.938
16"	40	88.63	0.688		11.374
	80	63.44	0.438	14.000	13.124
Std	40	106.13	0.750		12.500
	80	62.58	0.375	16.000	15.250
80	40	82.77	0.500		15.000
	80	136.61	0.844		14.312



available in 21', 24', 42' Lengths

SQUARE TUBING

Size	Wall Thickness	Wt. Per FT.	
1/2" x 1/2"	16 GAUGE	0.38	
3/4" X 3/4"	16 GAUGE	0.61	
	14 GAUGE	0.75	
	1/8"	1.03	
1" X 1"	16 GAUGE	0.83	
	14 GAUGE	1.04	
	1/8"	1.44	
1-1/4" X 1-1/4"	16 GAUGE	1.05	
	14 GAUGE	1.32	
	1/8"	1.84	
1-1/2" X 1-1/2"	18 GAUGE	0.97	
	16 GAUGE	1.27	
	1/8"	2.25	
	3/16"	3.35	
1-3/4" X 1-3/4"	14 GAUGE	1.88	
	1/8"	2.68	
2" X 2"	16 GAUGE	1.71	
	14 GAUGE	2.1	
	1/8"	3.05	
	10 GAUGE	3.41	
	8 GAUGE	4.12	
	3/16"	4.32	
2-1/8" X 2-1/8"	10 GAUGE	3.63	
	2-1/2" X 2-1/2"	16 GAUGE	2.12
		14 GAUGE	2.67
		1/8"	3.9
		10 GAUGE	4.32
8 GAUGE	5.24		
3/16"	5.59		
1/4"	7.11		
3" X 3"	14 GAUGE	3.23	
	1/8"	4.75	
	3/16"	6.87	
	1/4"	8.8	
	5/16"	10.58	
	3/8"	12.16	
3-1/2" X 3-1/2"	1/8"	5.61	
	3/16"	8.15	
	1/4"	10.51	
	5/16"	12.7	
	3/8"	14.71	
4" X 4"	14 GAUGE	4.42	
	1/8"	6.46	
	3/16"	9.42	
	1/4"	12.21	
	5/16"	14.83	
	3/8"	17.27	
1/2"	21.63		
5" X 5"	3/16"	11.97	
	1/4"	15.62	
	5/16"	19.08	
	3/8"	22.37	
	1/2"	28.43	
6" X 6"	3/16"	14.53	
	1/4"	19.02	
	5/16"	23.34	
	3/8"	27.48	
	1/2"	35.24	
	5/8"	42.26	
7" X 7"	3/16"	17.08	
	1/4"	22.42	
	5/16"	27.59	
	3/8"	32.58	
	1/2"	42.05	
8" X 8"	3/16"	19.63	
	1/4"	25.82	
	5/16"	31.84	
	3/8"	37.69	
	1/2"	48.85	
	5/8"	59.33	
9" x 9"	3/16"	22.18	
	1/4"	29.23	
	5/16"	36.1	
	3/8"	42.79	
	1/2"	55.66	
10" X 10"	3/16"	24.73	
	1/4"	32.63	
	5/16"	40.35	
	3/8"	47.9	
	1/2"	62.46	
	5/8"	76.33	
12" X 12"	3/16"	29.84	
	1/4"	39.43	
	5/16"	48.86	
	3/8"	58.1	
	1/2"	76.07	
	5/8"	93.25	
14" X 14"	5/16"	57.36	
	3/8"	68.31	
	1/2"	89.68	
16" X 16"	3/8"	78.52	
	1/2"	103.3	



RECTANGULAR TUBING

Size	Wall	Wt. Per Ft.	Size	Wall	Wt. Per Ft.	Size	Wall	Wt. Per Ft.
1" X 1/2"	16 GAUGE	0.61	5" X 4"	3/16"	10.7	10" X 3"	3/16"	15.81
	14 GAUGE	0.75		1/4"	13.91		1/4"	20.72
1" X 3/4"	16 GAUGE	0.72	5/16"	16.96	10" X 4"	5/16"	25.47	
	14 GAUGE	0.89		3/8"		19.82	3/16"	17.08
1-1/4" X 1"	16 GAUGE	0.94	6" X 2"	1/8"	6.46	1/4"	22.42	
	14 GAUGE	1.18		3/16"	9.42		5/16"	27.59
1/8"	1.64	1/4"	12.21	3/8"	32.58	1/2"	42.05	
	16 GAUGE		0.94		5/16"		14.83	3/8"
1-1/2" X 1"	14 GAUGE	1.18	3/8"	17.27	10" X 5"	3/8"	35.13	
	1/8"	1.64		1/8"		7.31	3/16"	19.63
1-3/4" X 1-1/4"	16 GAUGE	1.05	3/16"	10.7	1/4"	25.82		
	14 GAUGE	1.32		1/4"		13.91	5/16"	31.84
1/8"	1.84	5/16"	16.96	3/8"	37.69	1/2"	48.85	
	16 GAUGE		1.27		3/8"		19.82	1/2"
14 GAUGE	1.6	1/2"	25.03	10" X 8"	3/16"	22.18		
	1/8"		2.25		1/8"	8.16	1/4"	29.23
2" X 1"	16 GAUGE	1.38	3/16"	11.97	5/16"	36.1		
	14 GAUGE	1.74		1/4"		15.62	3/8"	42.79
1/8"	2.46	5/16"	19.08	1/2"	55.66	12" X 2"	3/16"	17.1
	16 GAUGE		1.49		3/8"		22.37	1/4"
14 GAUGE	1.88	1/2"	28.43	6" X 5"	3/16"	13.25		
	1/8"		2.66		1/4"	17.32	3/8"	32.57
2-1/2" X 1"	14 GAUGE	1.88	5/16"	21.21	12" X 3"	1/4"	24.12	
	1/8"	2.66		3/8"		24.93	3/16"	19.63
2-1/2" X 1-1/2"	16 GAUGE	1.71	7" X 3"	3/16"	11.97	5/16"	31.84	
	14 GAUGE	2.1		1/4"	15.62		3/8"	37.69
1/8"	3.05	5/16"	19.08	1/2"	48.85	3/16"	22.18	
	3/16"		4.32		3/8"		22.37	1/4"
1/4"	5.4	7" X 4"	3/16"	13.25	5/16"	36.1		
	16 GAUGE		1.71	1/4"		17.32	3/8"	42.79
14 GAUGE	2.1	5/16"	21.21	1/2"	55.66	5/8"	67.82	
	1/8"		3.05		1/2"		31.84	3/16"
3/16"	4.32	3/8"	24.93	12" X 8"	3/16"	32.63		
	1/4"		5.4		1/4"	19.02	1/4"	40.35
3" X 1"	16 GAUGE	1.71	7" X 5"	3/16"	14.53	5/16"	40.35	
	14 GAUGE	2.1		3/8"	27.48		3/8"	47.9
1/8"	3.05	1/2"	35.24	1/2"	62.46	5/8"	76.33	
	3/16"		4.32		1/4"		15.62	1/4"
1/4"	5.4	8" X 2"	3/16"	11.97	5/16"	36.1		
	16 GAUGE		1.9	1/4"		17.32	3/8"	42.79
14 GAUGE	2.38	5/16"	19.08	14" X 4"	1/4"	32.63		
	1/8"		3.48		3/8"	22.37	1/4"	47.9
3/16"	4.95	8" X 3"	3/16"	13.25	14" X 6"	1/4"	32.63	
	1/4"		6.25	1/4"		17.32	5/16"	40.35
3" X 2"	16 GAUGE	2.12	1/4"	17.32	5/16"	40.35		
	14 GAUGE	2.67		3/8"		24.93	1/2"	62.46
1/8"	3.9	1/2"	31.84	14" X 10"	5/16"	48.86		
	3/16"		5.59		3/16"	14.53	3/8"	58.1
1/4"	7.11	8" X 4"	3/16"	14.53	1/2"	76.07		
	16 GAUGE		2.12	1/4"		19.02	1/4"	32.63
14 GAUGE	2.67	5/16"	23.34	16" X 4"	1/4"	40.35		
	1/8"		3.9		3/8"	27.48	3/8"	47.9
3/16"	5.59	1/2"	35.24	1/2"	62.46	16" X 8"	5/16"	48.86
	1/4"		7.1		3/16"		17.08	1/2"
3-1/2" X 1-1/2"	14 GAUGE	3.23	1/4"	22.42	18" X 6"	5/16"	48.86	
	1/8"	4.75		5/16"		27.59	3/8"	58.1
3/16"	6.87	3/8"	32.58	1/2"	76.07	20" X 4"	3/8"	58.1
	1/4"		8.8		1/2"		42.05	1/2"
4" X 1-1/2"	1/8"	4.48	9" X 3"	3/16"	14.53	20" X 8"	3/8"	58.1
	14 GAUGE	3.23		1/4"	19.02		1/2"	76.07
1/8"	4.75	5/16"	23.34	9" X 5"	3/16"	17.08		
	3/16"		6.87		1/4"	22.42	1/2"	89.68
1/4"	8.81	3/8"	27.48	1/8"	5.61	9" X 7"	3/16"	19.63
	16 GAUGE		3.8		5/16"		27.59	1/4"
1/8"	5.61	1/2"	42.05	3/8"	32.58	5/16"	37.69	
	3/16"		8.15		1/2"		48.85	3/16"
1/4"	10.51	10" X 2"	3/16"	14.53	1/4"	19.02		
	1/8"		6.46	1/4"		19.02	5/16"	23.34
3/16"	9.42	3/8"	27.48	1/2"	48.85	3/8"	27.48	
	1/4"		12.21		3/8"		24.93	
5/16"	14.83	1/2"	21.63					
	3/8"		17.27					
1/2"	21.63							

